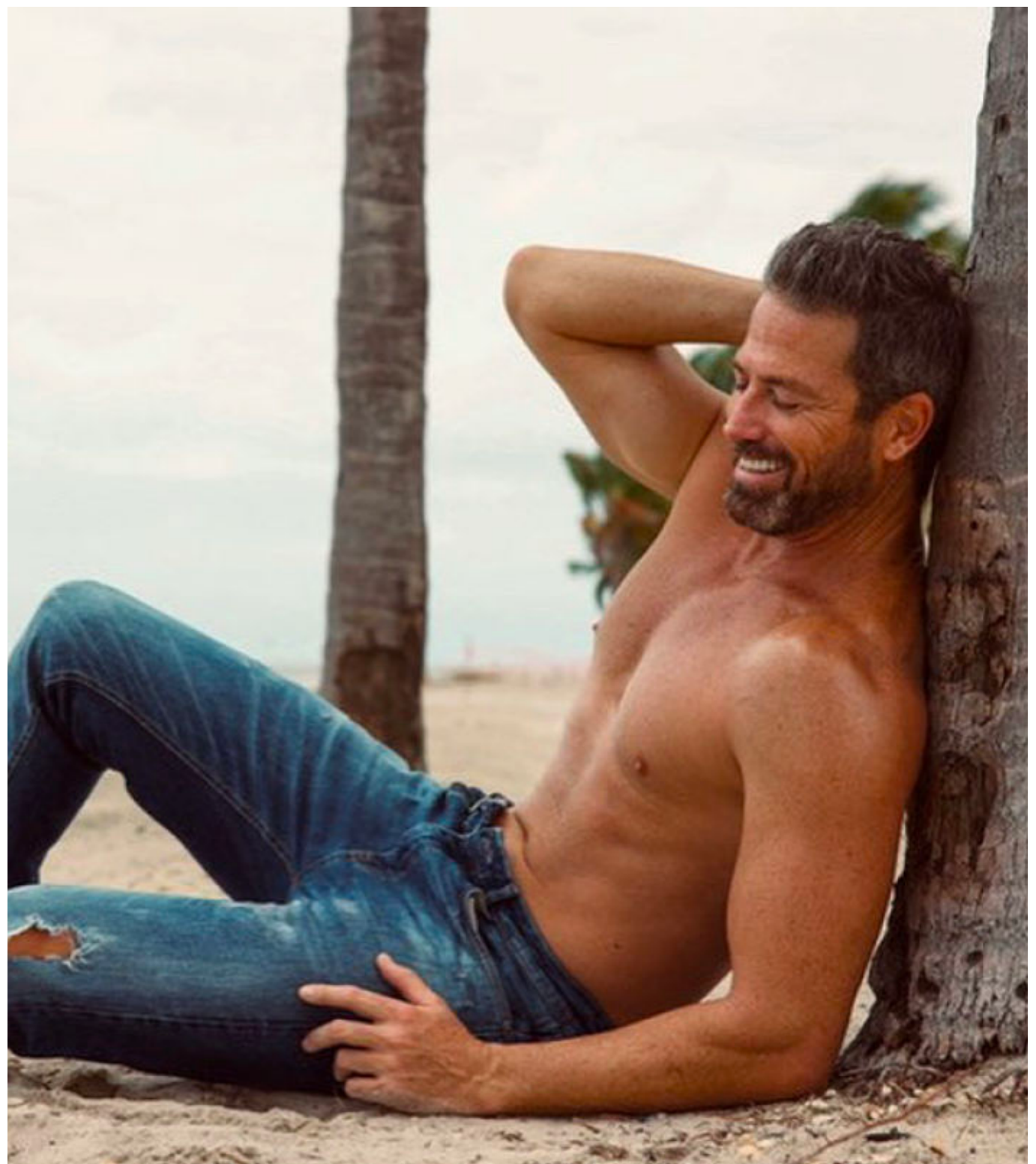


W

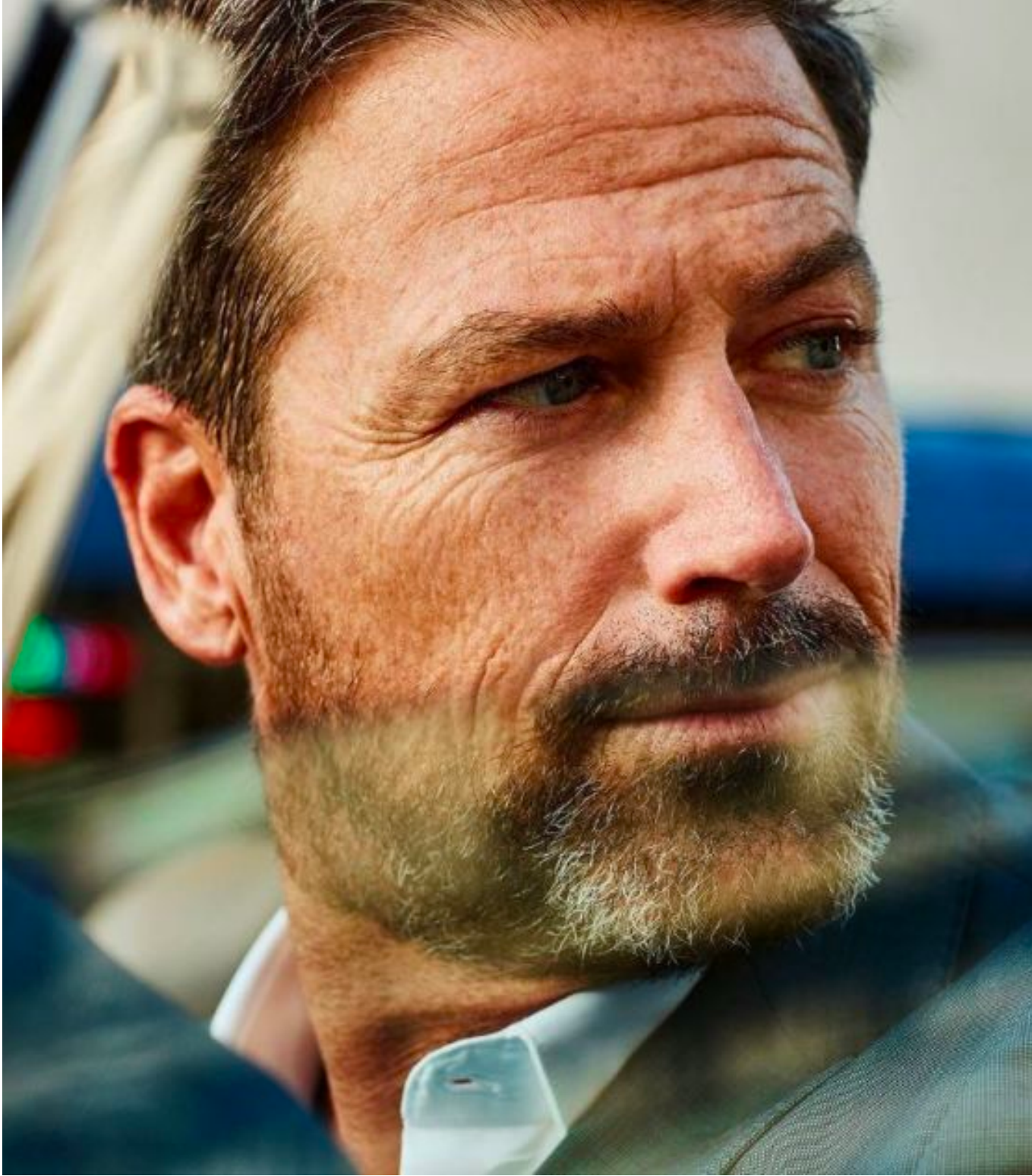


JASON MCALISTER

HEIGHT 6'2" | WAIST 32" | SHOE 12 | HAIR SALT & PEPPER | EYES BLUE

VERGE MODELS | LOS ANGELES | E. karen@vergemodels.com

V

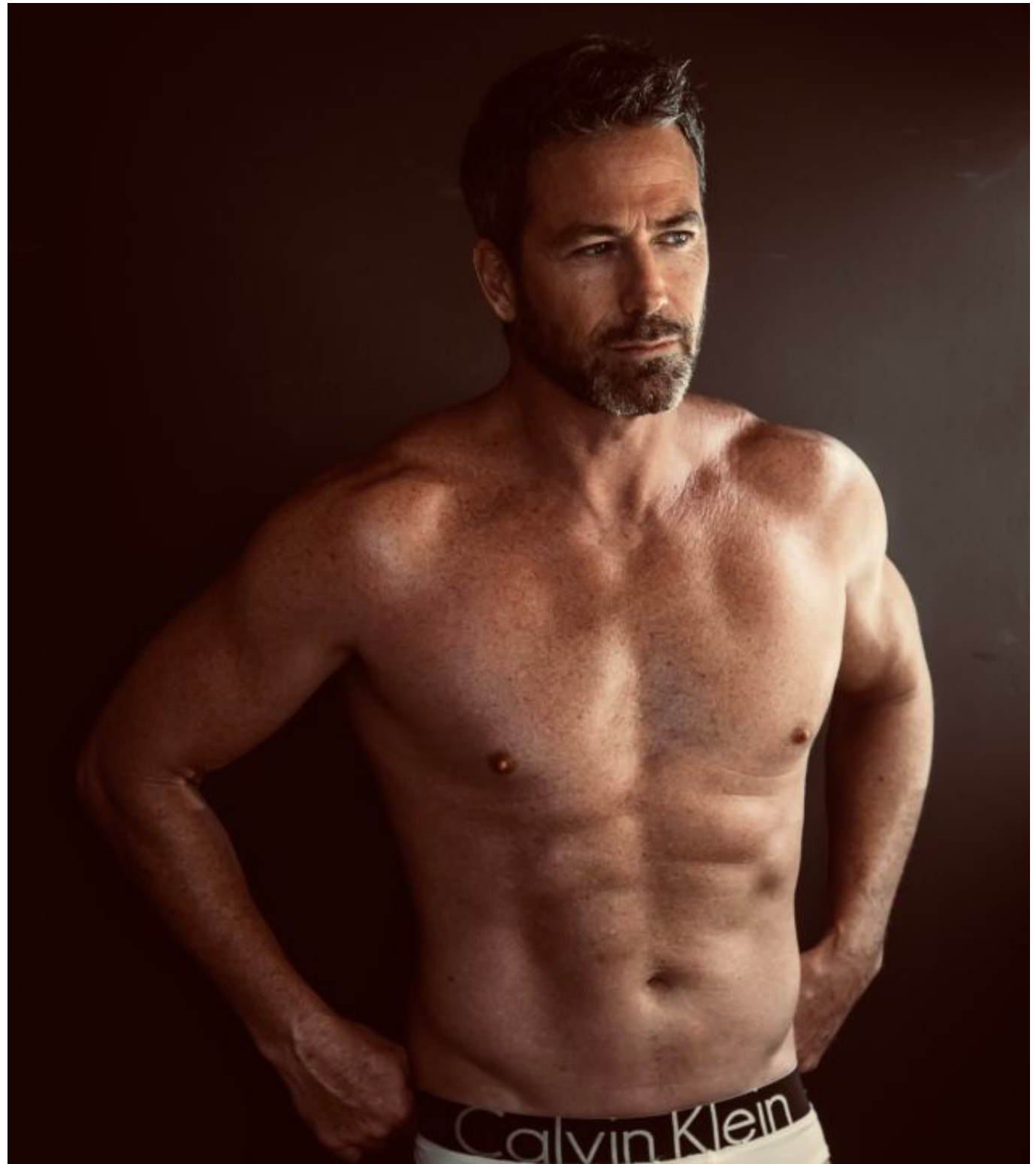
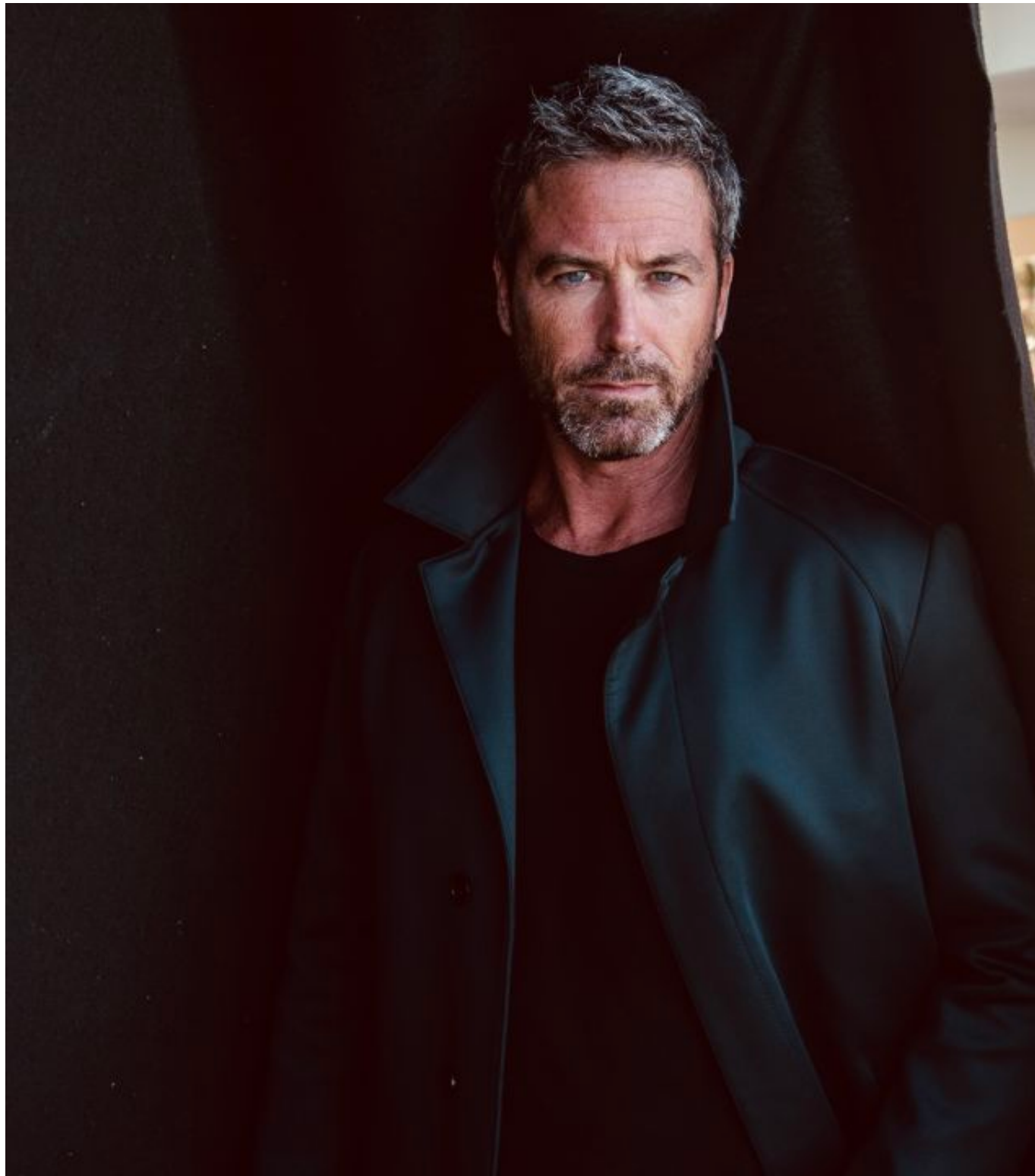


JASON MCALISTER

HEIGHT 6'2" | WAIST 32" | SHOE 12 | HAIR SALT & PEPPER | EYES BLUE

VERGE MODELS | LOS ANGELES | E. karen@vergemodels.com

W

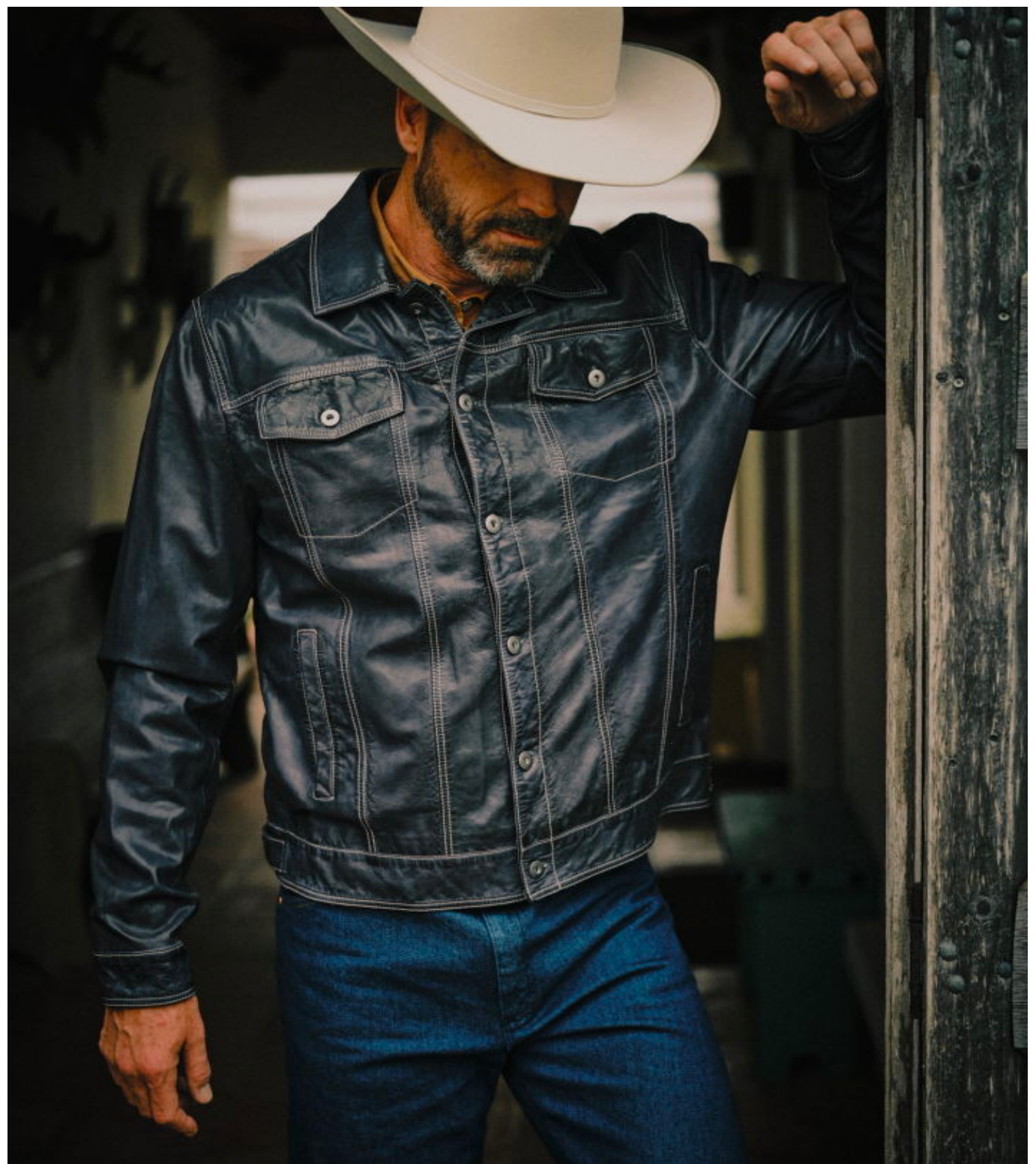


JASON MCALISTER

HEIGHT 6'2" | WAIST 32" | SHOE 12 | HAIR SALT & PEPPER | EYES BLUE

VERGE MODELS | LOS ANGELES | E. karen@vergemodels.com

V

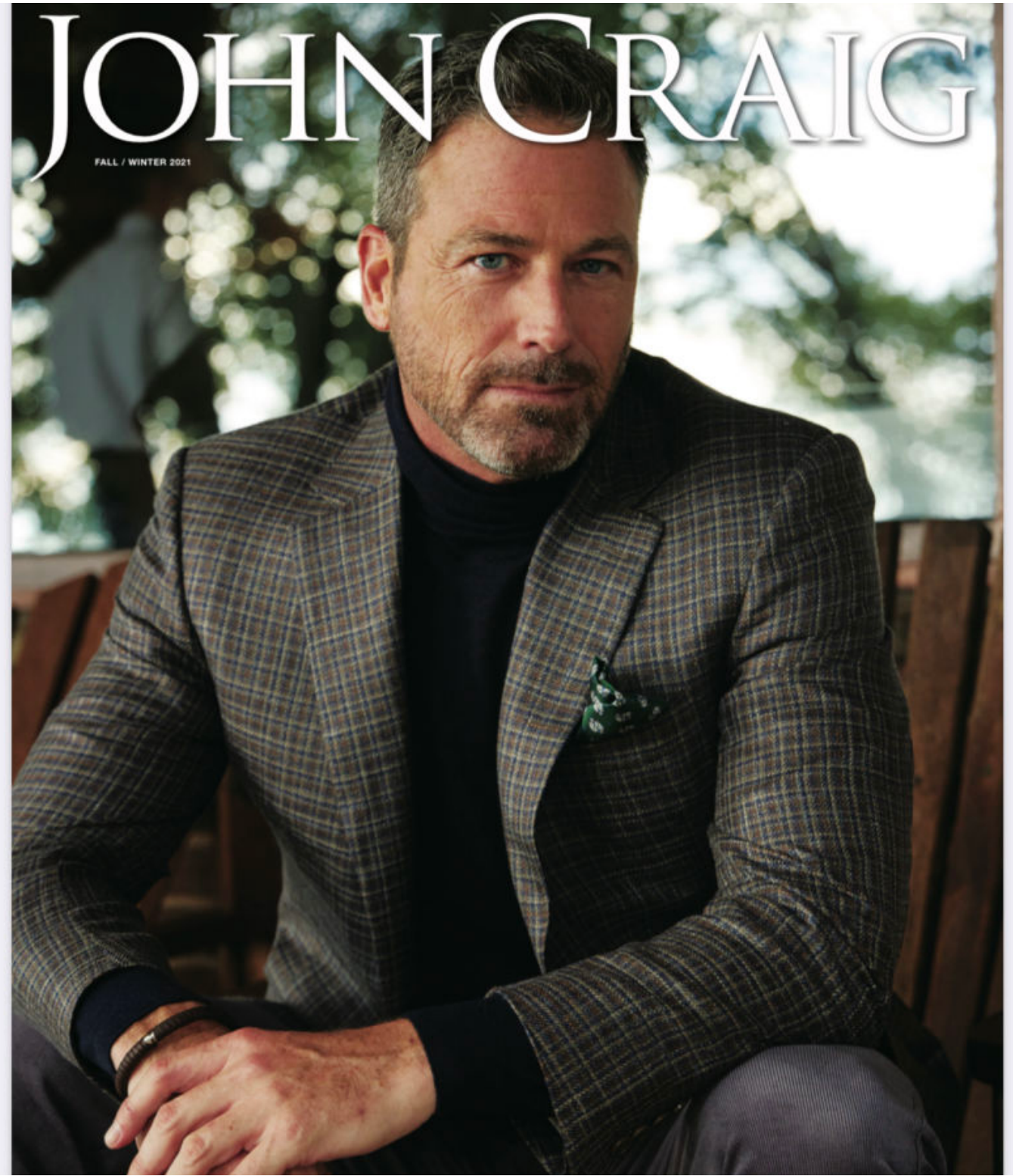


JASON MCALISTER

HEIGHT 6'2" | WAIST 32" | SHOE 12 | HAIR SALT & PEPPER | EYES BLUE

VERGE MODELS | LOS ANGELES | E. karen@vergemodels.com

V



JASON MCALISTER

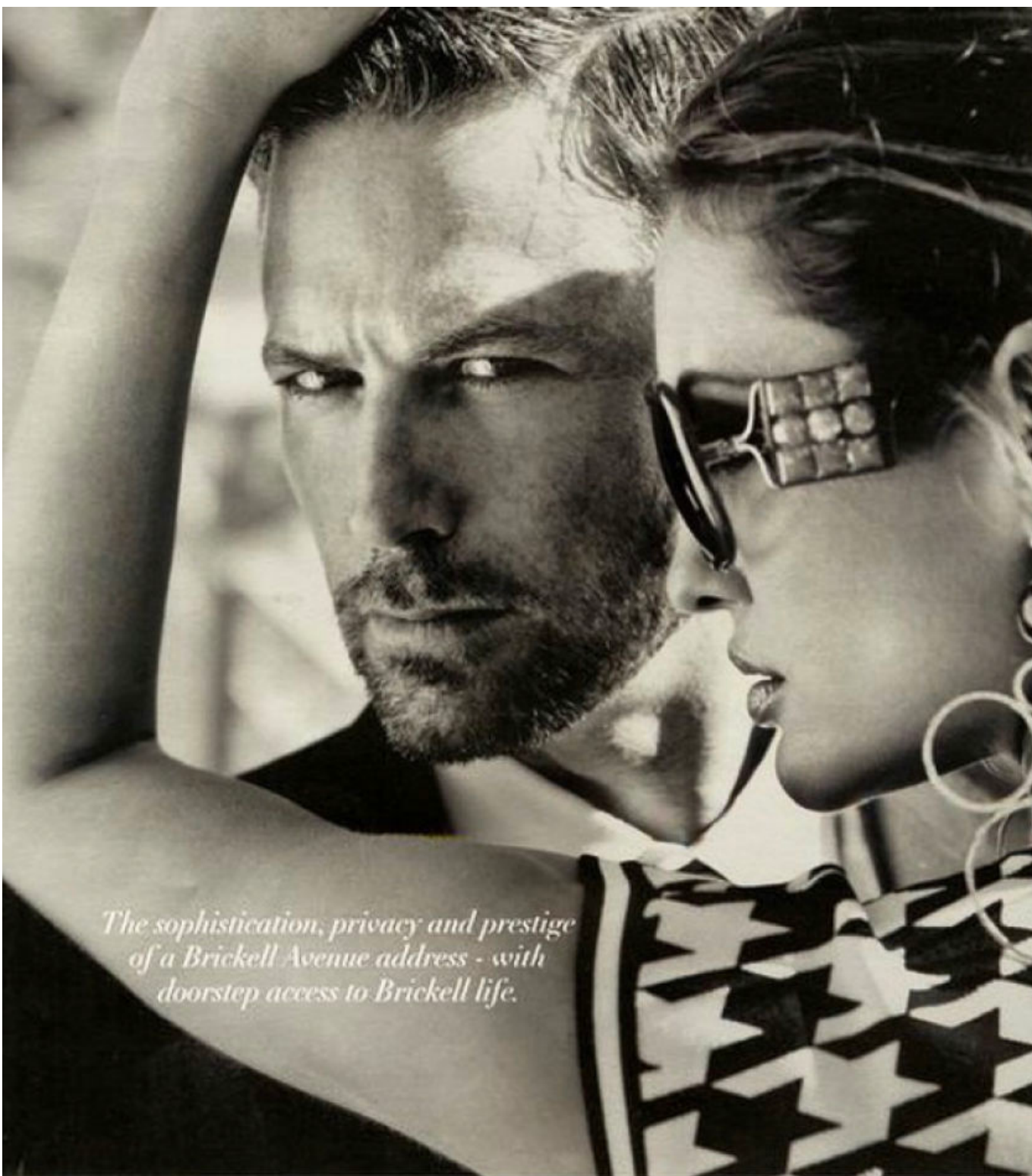
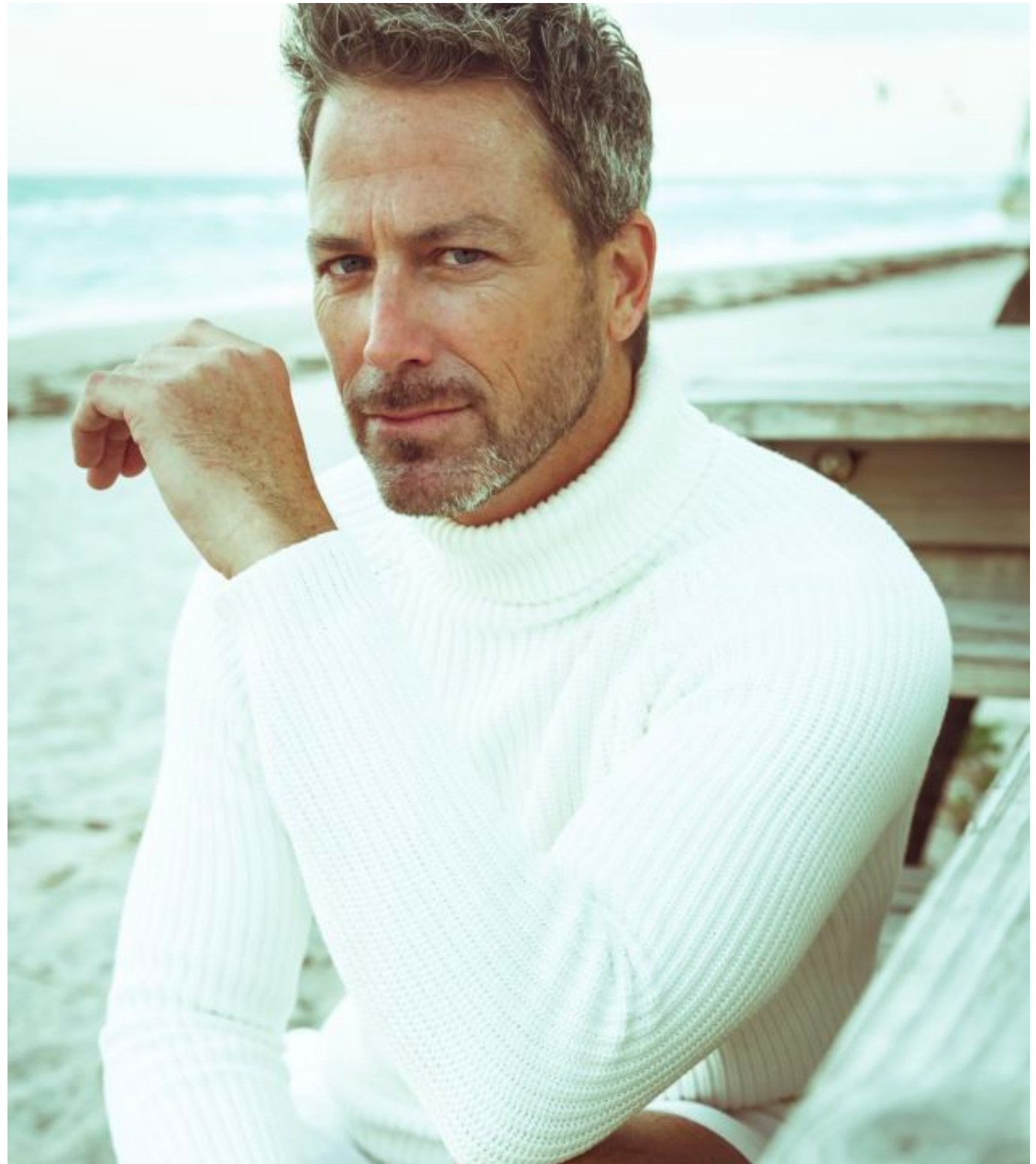
HEIGHT 6'2" | WAIST 32" | SHOE 12 | HAIR SALT & PEPPER | EYES BLUE

VERGE MODELS | LOS ANGELES | E. karen@vergemodels.com

W



On him: Paul Stuart tuxedo shirt, Canali jacket and trouser, Zara socks, To Be dress shoes, Paul Stuart bowtie
On her: Jason Wu dress, Gianvito Rossi



The sophistication, privacy and prestige of a Brickell Avenue address - with doorstep access to Brickell life.



JASON MCALISTER

HEIGHT 6'2" | WAIST 32" | SHOE 12 | HAIR SALT & PEPPER | EYES BLUE

VERGE MODELS | LOS ANGELES | E. karen@vergemodels.com